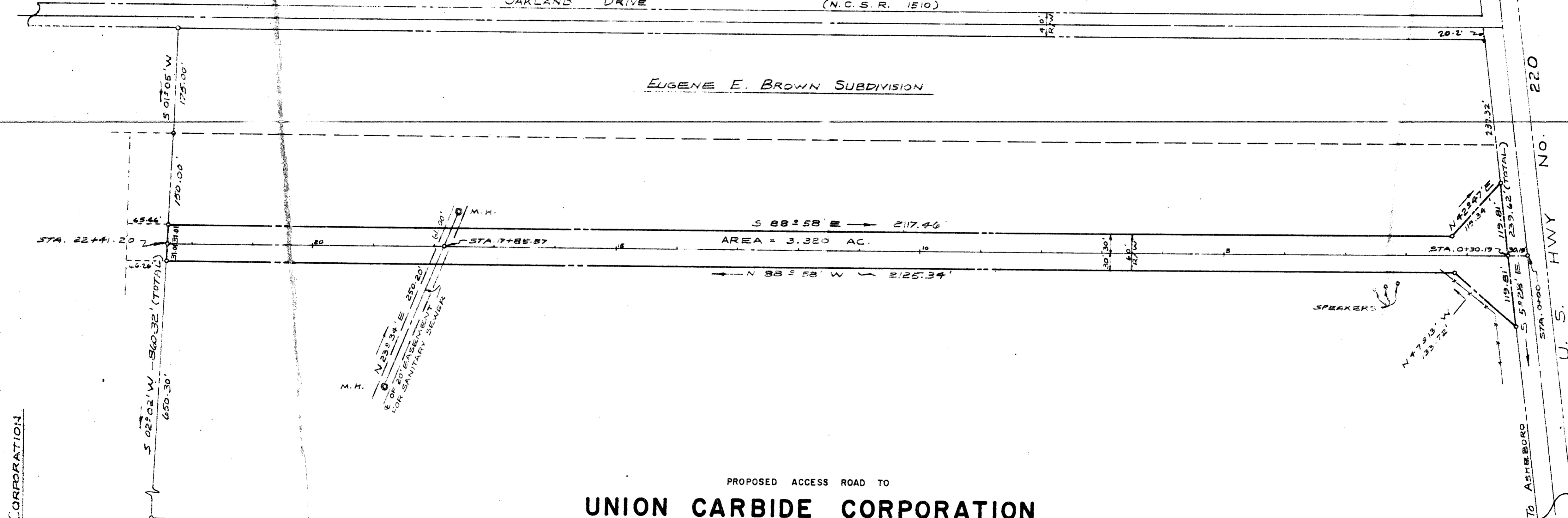


MAG. NORTH

OAKLAND DRIVE (N.C.S.R. 1510)

EUGENE E. BROWN SUBDIVISION



UNION CARBIDE CORPORATION

PROPOSED ACCESS ROAD TO  
**UNION CARBIDE CORPORATION**

NORTH ASHEBORO  
 RANDOLPH COUNTY NORTH CAROLINA

SCALE 1"=100' NOVEMBER, 1966

MOORE, GARDNER AND ASSOCIATES, INC., CONSULTING ENGINEERS  
 ASHEBORO, NORTH CAROLINA

U. S. HWY No. 220  
 TO ASHEBORO